

Western Provincial Education Department – Colombo Educational Zone

Second Term Evaluation - 2017

Information & Communication Technology

Grade 11

Marking Scheme

(1) (i) $D8_{16}$

Converting to Binary

D	8	
1101	1000	
0 1 1 0 1 1 0 0 0		Binary Number
$\underbrace{\hspace{1em}}_3$ $\underbrace{\hspace{1em}}_3$ $\underbrace{\hspace{1em}}_0$		Octal Number

$D8_{16} = 330_8$

OR

Converting Hexadecimal to Decimal

$D8_{16}$			
↓	→	$16^0 \times 8 = 1 \times 8 = 8$	
↓	→	$16^1 \times 13 = 16 \times 13 = 208$	
			$= 216$

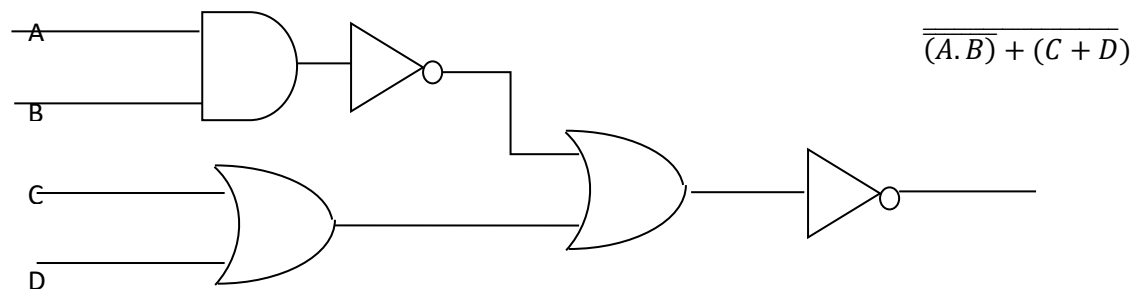
Converting Decimal to Octal

8		216	
—			
8		27	- 0
—			
8		3	- 3
—			
		0	- 3

$D8_{16} = 330_8$

(Marks=2)

(ii) $\overline{\overline{(A.B)} + (C + D)}$



(Marks=2)

(iii) (a) advantages

I Lower software cost

- II Improve performance
- III Fewer maintenance issues
- IV Instant software updates (Marks=1)

(a) **Disadvantages**

- I Requires a constant Internet connection
- II Does not work well in low speed Internet connection (Marks=1)

(iv)

- A. Android
- B. Java
- C. word perfect
- D. Disk formatting (1/2 x 4 = 2)

(v)

- A Data
- B Information
- C Information
- D Data (1/2 x 4 = 2)

(vi)

- A correct
- B correct
- C incorrect
- D incorrect (1/2 x 4 = 2)

(vii)

- (i) Breakdown of network
- (ii) Virus can spread
- (iii) Computer break down (Marks 1x2=2)

(viii) **Nationalities in Sri Lanka**

- 1. Sinhala
- b. Tamil
- 3. Muslim
- 4. Burgher (Marks=2)

(ix) Remote Access (Marks=2)

- (x) 8 (Marks=2)
- (02) (i) = sum(C3:C6) / = C2+C3+C4+C5+C6 (Marks=1)
- (ii) **Formula in C8**
 = Count(C2:C6) (Marks=1)
- Formula in C9**
 = max(C2:C6) (Marks=1)
- (iii) ==D2+D2*C\$10 (Marks=2)
- (iv) = F2*C2 (Marks=1)
- (v) =SUM(G2:G6) (Marks=1)
- (vi) E2, E3, E4, E5, E6, F2, F3, F4, F5, F6, G2, G3, G4. G5, G6,G7 (Marks=)
- (03) (i) A system is a collection of components that intract to achieve a specific task.
 (Marks=2)
- (ii) i. Since the Datais manually processed , errors can be occur.
 ii. Processing of data is less efficient
 iii requires a large space for data storage (1 x 2 = 2 Marks)
- (iii) A F
 B E
 C H
 D G (1/2 x 4 = 2)
- (iv) I. Developing systems to suit new user requirements
 ii. Adopting new technology into the new system to improve efficiency.
 iii. Issues that surfaced with the use of the system which were not identified during system development. (1 x 2 = 2 Marks)
- (v) i. The result of the developed system found at the Final Stage.
 ii. This model has a limitation of Developing a system that is different to what the user wants as the user sees the system at the end of the Life Cycle. (1 x 2 = 2 Marks)
- (04) (a) (i) (RAM
 (ii) Operating system
 (iii) Switch
 (iv) Mouse
 (v) Utility software (1 x 5 = 5 Marks)
- (b) P WordArt
 Q Justification
 R Font Italic

- S Columns
 - T Bulleted List
 - U Insert Picture
- (½ x 6 = 3)

(c) Mail Merge (Marks=1)

- (d)
- i. Number of Lines
 - ii. Font Size
 - iii. Inserting images, drawings, tables or graphs
 - iv. Use of colors
 - v. Animation and videos
- (½ x 2 = 1)

(05) (i) fields 5
Records 8 (½ x 2 = 1)

- (ii)
- | | | |
|----------------|---------------|--------------------|
| Vegetable_Code | Text | |
| Vegetable | Text | |
| Supplier_ID | Text | |
| Date_Supplied | Date and Time | |
| Supplier | Text | (½ x 5 = 2½ Marks) |

(iii) Composite Key
Vegetable_Code + Supplier_ID (Marks=1½)

(iv) Data Duplication (Marks=1)

(v) **Vegetable Table**

Vegetable_Code	Vegetable
B100	Beans
B101	Beetroot
B102	Cabbage
A103	Potatoes
A104	Pumpkin
C105	Tomatoes

Supplier Table

Supplier_ID	Date_Supplied	Supplier
Sup1	01/02/17	Malan
Sup2	12/03/17	Dinesh
Sup3	25/03/17	Asanka
Sup4	12/04/17	Parakrama
Sup5	12/04/17	Sampath
Sup6	09/05/17	Thushara

Vegetable_Supplier Table

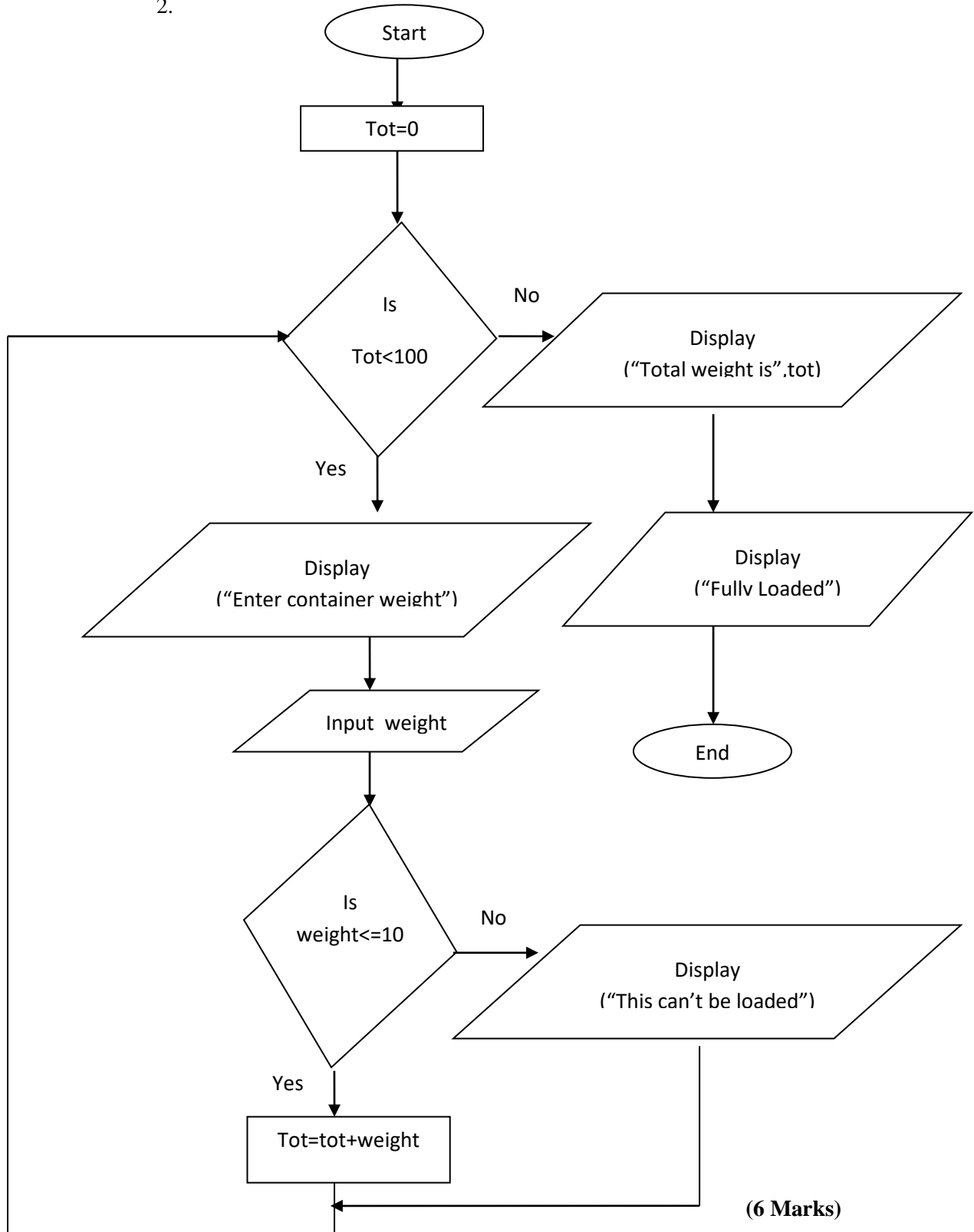
Vegetable_Code	Supplier_ID
B100	Sup1
B101	Sup1
B102	Sup2
B102	Sup3
A103	Sup4
A104	Sup5
A104	Sup6
C105	Sup2

(Marks=3)

(vi) many to many (Marks=1)

(06) {a} 1. 100
2.

(Marks=1)



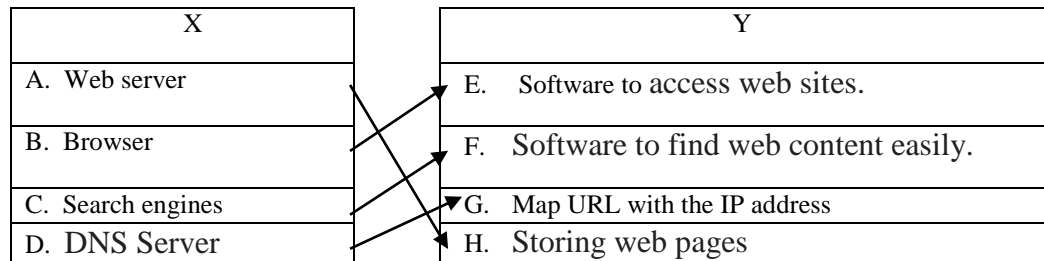
(b) 10 12 27 54 5 15

(1/2 x 6 = 3 Marks)

- (07) 1. A P
 B R
 C Q
 D S

($\frac{1}{2} \times 4 = 2$ Marks)

2.



($\frac{1}{2} \times 4 = 2$ Marks)

3. WWW - World Wide Web
 FTP - File Transfer Protocol
 Remote Access
 File Sharing
 Streaming of Media
 Search Enging
 e mail - Electronic Mail

(1 x2 = 2 Marks)

4. advantages

- I Lower software cost
 II Improve performance
 III Fewer maintenance issues
 IV Instant software updates

(1 x2 = 2 Marks)

5.

PLAYER_No	NAME	SCORE
P1	Jayasekara	10
P2	Steevan	20
P3	Fernando	00

(2 Marks)