

8. A network provide us some services. Which of following terms content only the services?
1. Data sharing, Communication, spread virus
 2. Sharing of resource, Entertainment, communication
 3. Sharing of resource, Entertainment, Hacking
 4. Data sharing, Communication , system break down.

9. BIOS is a read Only Memory (ROM) that can be
- i. volatile
 - ii. accessed randomly
 - iii. mounted on the mother board
 - iv. contains the bootstrap loader
1. i and iii
 2. i, ii and iv
 3. ii, iii and iv
 4. iii and iv

10. * A part of a cpu
 * A memory that embedded a firmware
 * A port to connect LAN when using Twisted pair cable.
 Find out the hardware devices, which are described by the statements above respectively.
1. RJ 45 / ROM / ALU
 2. ROM / ALU / RJ 45
 3. ALU / ROM / RJ 45
 4. ALU / RJ 45 / ROM

11. The ECG machine is an example of a ..
1. Analog device.
 2. Digital device
 3. Hybrid device
 4. Non of the above.

12. The first ever man made machine is believed as ?
1. Napier's Bone
 2. Pascaline
 3. Abacus
 4. Analytical engine

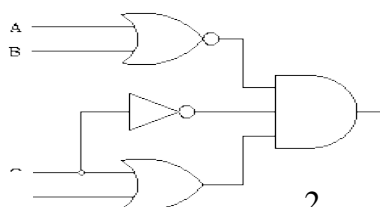
13. Some operating systems allow more than one program to run concurrently that is known as
1. Multi User
 2. Real time Processing
 3. Multi-tasking
 4. Multi-threading

14. The Boolean expression $(1 \cdot 0 + 1 \cdot 0 + 0) \cdot 1$ is equivalent to
1. 1
 2. 0
 3. 2
 4. None of the above

15. An invalid formula in spreadsheet is
1. $= (XA1 * 5) + BA2$
 2. $=\text{Sum} (2AB1 + BA1)$
 3. $= DC1 + (CA3 \wedge 2 - 1)$
 4. $=\text{Sum} (AM1:AN2,AP3) + 10$

16. The operating system does not manage.
1. File
 2. Memory
 3. Device
 4. Calculation

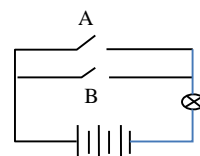
17. Which of the following would be the output of the logic circuit given below?



1. $(A+B) \cdot (C + D) + \bar{C}$
2. $(A \cdot B) \cdot (C \cdot D) + C$
3. $(A + B) \cdot (D + C) \cdot \bar{C}$
4. $(A \cdot B) \cdot (A \cdot C) \cdot C$

18. Tasks that are more suitable for a human than a computer
- tasks that are repetitive and easy to automate
 - mathematical operations
 - understanding the context of the situation
 - hazardous warning system
19. The hexadecimal equivalent of Octal value 432 is
- 12A
 - 11A
 - 10A
 - A11
20. The value of $1111_2 + 0111_2$
- 11100_2
 - 10110_2
 - 10101_2
 - 10000_2
21. $4 \times 2^{10} \times 2^{10}$ bytes equals to,
- $2^2 \times 2^{10} \times 1024$ Bytes
 - $2 \times 2 \times 2^{10} \times 2^{10} \times 2^{10}$ bytes
 - $2^4 \times 2^{10} \times 2^{20} \times$ Bytes
 - $2^{10} \times 2^{10} \times 2^3$ Bytes
22. Consider the following statements.
 A – Can be used as a free software.
 B – Can modify software to suit as you need.
 C – mostly not attacked by virus.
 Which of the above is / are the advantages of free and open source software.
- A only.
 - A & B only.
 - B & C only.
 - All of the above.
23. Amal has connected his mobile phone to a notebook computer without using physical cables to transfer some photographs from his mobile phone to the notebook computer. Which of the following types of communication media and the type of network is/ are used for this purpose?
 A – Guided media B – Unguided media C – Local area D – Wide area
- A and B only
 - A and C only
 - B and C only
 - B and D only
24. Adding _____ to objects on your slides not only controls the flow of information, but adds interest to your presentation.
- a background
 - a slide transition
 - an animation
 - A pop-up
25. Followings are 8 transistors with appropriate state of operations. Find the correct Binary representation
- | | | | | | | | |
|-----|----|----|-----|----|-----|----|----|
| Off | On | On | Off | On | Off | On | On |
|-----|----|----|-----|----|-----|----|----|
- 10010100
 - 01101011
 - 01100110
 - 01011010
26. An example for pointing device
- Mouse
 - Key board
 - Scanner
 - Monitor
27. What is the logic gate that show using the following analog circuit ?

- AND
- OR
- NAND
- NOR



28. $1101111_2 + 111110_2$ is equal to..
1. 1011011_2
 2. 1110111_2
 3. 10101101_2
 4. 1110011_2
29. Which part of the CPU, handles the calculations $(2*4) = (12-4)$
1. Register
 2. CU
 3. ALU
 4. Accumulator
30. Name the type of scanner which use to correct the MCQ papers
1. OCR
 2. MIR
 3. OMR
 4. MICR
31. What is the part of the computer which uses to backup data and information in an efficient way?
1. Compact Disk
 2. A Server Hard Disk
 3. Floppy Disk
 4. 128MB SD memory
32. A person is believed as the Father of the computer is
1. Charles Babbage
 2. Blaise Pascal
 3. Gottfried Wilhelm
 4. Herman Hollerith
33. There are three types of data found in a spreadsheet which are commonly known as....
1. data, words, numbers
 2. equations, data, numbers
 3. words, numbers, labels
 4. numbers, formulas, labels
34. The formula $=\$A\$3*B3$ is located in cell **B1**. If this was copied and pasted into cell C1, what would the formula shown in cell C1:
- | | A | B | C | D |
|---|---|--------------|-------|---|
| 1 | | $=\$A\$3*B3$ | ????? | |
| 2 | 3 | 3 | 4 | 6 |
| 3 | 5 | 4 | 3 | 8 |
1. $=\$A\$3*B3$
 2. $=A3*B3$
 3. $=\$A\$3*C3$
 4. $=\$B\$3*C3$
35. Which of the following value is equal to 8 MB?
- (1) 8×2^{10} Bytes
 - (2) 8×2^{10} Bits
 - (3) 8×2048 Bytes
 - (4) 2^{26} Bits
36. ICT is used by the users for different purpose. Identify the field in which ATM and CAT are used.
1. Education / Medicine
 2. Agriculture / Engineering
 3. Banking / Medicine
 4. Transport / Manufacturing
37. The network topology which is design using the central device such as switch or router and computers is known as ,
1. Bus topology
 2. Tree topology
 3. Star topology
 4. Ring topology

38. Programs stored in ROM are known as..

- | | |
|-------------|------------------|
| 1. Hardware | 2. Firmware |
| 3. Software | 4. None of these |

39. Mostly which of the following device is used to carry user files from one computer to another in modern day computing?

- | | |
|----------------|-----------------|
| 1. Floppy Disk | 2. Hard Disk |
| 3. RAM | 4. Flash memory |

40. Which base number is used in number system mark the digits {0,1,2,3,4,5,6,7}.

- | | | | |
|-------|--------|-------|---------|
| (1) 2 | (2) 16 | (3) 8 | (4) 10. |
|-------|--------|-------|---------|